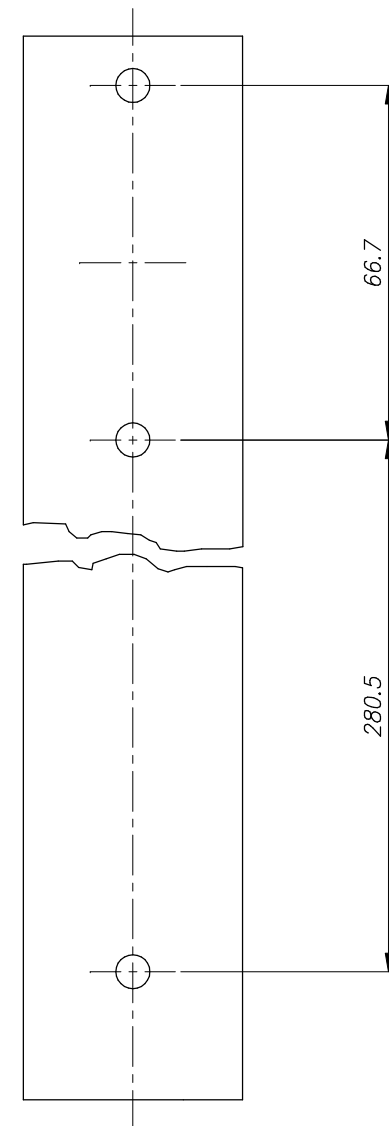
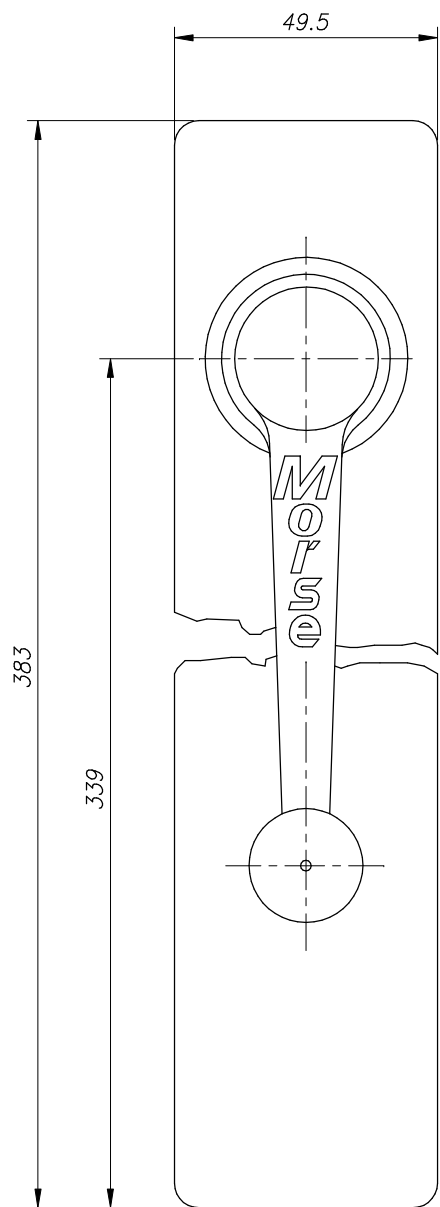
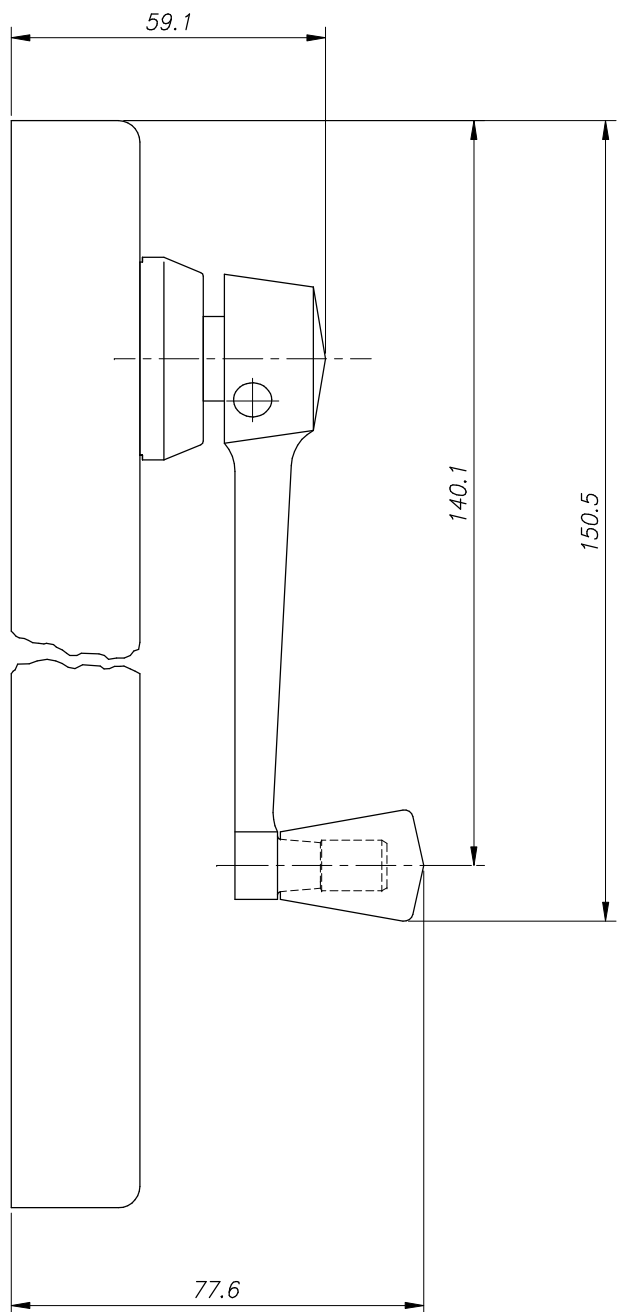


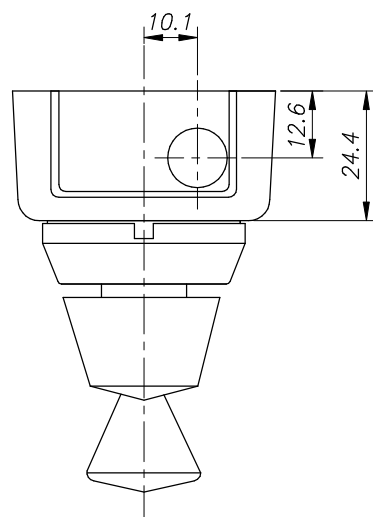
THIS DRAWING IS THE PROPERTY OF KONGSBERG AUTOMOTIVE AND MUST NOT BE COPIED OR COMMUNICATED TO ANY PERSONS WITHOUT THE PERMISSION OF KONGSBERG AUTOMOTIVE POWER PRODUCT SYSTEMS.

DIVISION Architectural

ZONE	REV.	E.C.O. No.	DESCRIPTION	DATE	MADE BY	EFF	APP'L
	1	223198	Introduced.	21.05.03	MF	X	KH
	2	Bl 08100	Company Logo updated.	15.09.08	KH	W	MS



FIXING HOLE POSITIONS



OPEN DIMENSIONS:  $\pm 1.0$  HOLES:  $+0.10$   
 $-0.03$   
 ANGLES:  $\pm 1^\circ$   
 GEOMETRICAL TOLERANCES AND SYMBOLS IN ACCORDANCE WITH B.S. 308 PARTS 1, 2 & 3.  
 THREADS TO B.S. 3643 PART 2 OR B.S. 1580 CLASS 2.  
 ALL DIMENSIONS ARE AFTER PLATING EXCEPT STOCK SIZES.  
 BREAK ALL SHARP EDGES AND CORNERS 0.5 MAX.  
 FINISHED PART TO BE FREE OF ALL FOREIGN MATERIAL.

PROJECTION

DIAMETERS SUBJECT TO  $\text{M} \text{ } \phi 0.2$

SURFACE ROUGHNESS  $\sqrt{R} \text{ } R_a$  UNLESS OTHERWISE STATED.

DESCRIPTION  
 Midi Operator  
 Outline Drawing  
 (Architectural)

		Power Product Systems Christopher Martin Road Basildon Essex, SS14 3ES England	
UK DRAWING No. <b>714600 POD</b>		REV <b>2</b>	
DATE <b>21.05.2003</b>		DRAWN BY <b>M. Farrell</b>	
SCALE <b>1:1</b>		APP'L <b>K.M. Holmes</b>	
		SIZE <b>A2</b>	